

# raxis

Axis rotation for sdt/spr data.

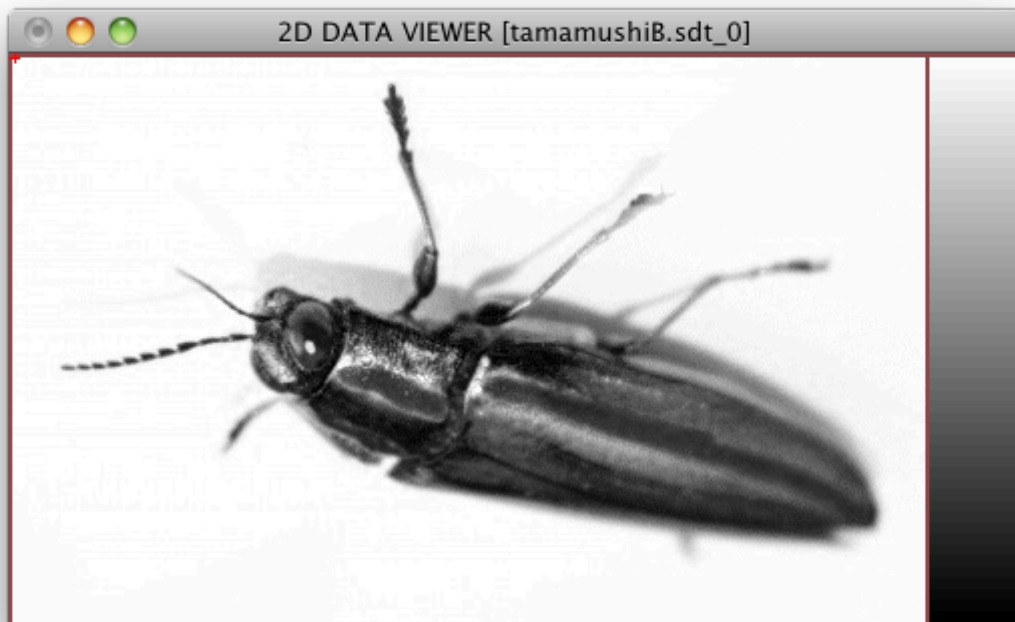
	Data format name	File extension
Input data	sdt/spr	*.sdt/spr
Output data	sdt/spr	*.sdt/spr

## Example

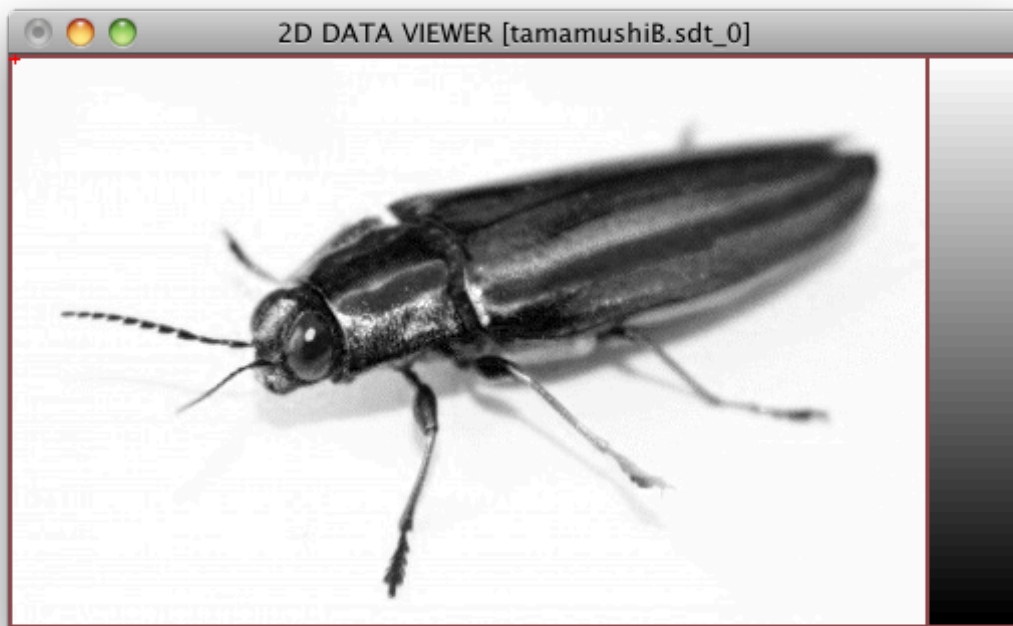
Axis rotation for sdt/spr data.

-----

```
>view2d tamamushiB.sdt<RET>
```



```
>raxis tamamushiB 1 -2<RET>  
>view2d tamamushiBX.sdt<RET>
```



```
> raxis <RET>  
raxis ver. 0.2c [2.Oct.2013]  
raxis [file name body] (x) (y) (s) (v)<RET>  
You should have [file name body].sdt/spr or .edt/epr  
When you have both of sdt and edt, the sdt is taken.  
(x) (y) (s) (v) : new axis  
  
>raxis run1 2 -3 1 4
```

by Ken